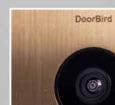
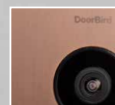




**DoorBird**  
Technology meets Design.



Different  
Colors

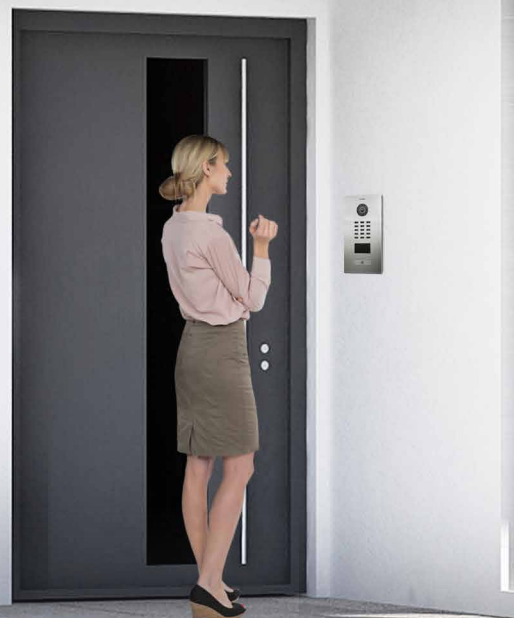
**D2101V**

## IP VIDEO DOOR STATION

For single-family houses and commercial buildings with 1 unit  
1 Call Button



# ANSWER YOUR DOOR ANYWHERE.



## HOW DOES IT WORK

Imagine, you are not at home and your children have locked themselves out or the courier delivers a package. With DoorBird this is no longer a problem. Each time someone rings the doorbell you get a push notification on your smartphone or tablet. You can then not only talk to the visitor but also see him in HD quality. You will never miss a visitor again. With DoorBird you are on the go and still at home, even if a burglar presses the doorbell to check if someone is at home.

## SMART HOME STARTS AT THE FRONT DOOR

DoorBird is the smart solution for your door entrance. The IP Video Door Station can be used as a stand-alone unit or can be integrated into an existing Smart-Home platform. Even existing classic installations such as a door chime or an electric door and gate opener can still be used and controlled via the App.

## QUALITY MADE IN GERMANY

DoorBird is designed, developed and produced in Berlin, Germany. DoorBird's "Made in Germany" is not only a motto but a philosophy. All DoorBird IP Video Door Stations are manufactured and tested in Berlin to guarantee the highest quality, longevity and customer satisfaction.

## ADVANTAGES



### Open API

- Local interface for the integration with third-party systems and SIP



### Video and audio call

- On smartphones and tablets (iOS, Android) or landline phones (SIP)



### Smart Transmission Mode (STM)

- Real-time audio / video communication, optimized for mobile devices via WiFi, 3G, 4G, 5G



### Smart Home & ONVIF compatible

- Control4, Loxone, Crestron, Synology, QNAP, AVM FRITZ!fon, URC, RTI, ELAN, Fibaro, Bang & Olufsen and others

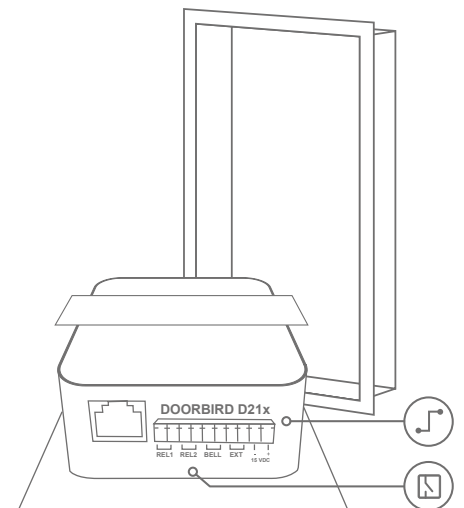


### Individual time and action plans, e.g.:

- RFID card „abc“ has only admission on Wednesday from 9 am until 11 am
- 4D motion sensor switches on external lamp between 9 pm and 6 am



**DoorBird**  
Technology meets Design.



#### **Automatic door opener**

- For use in medical offices and office environments



#### **Free cloud recording**

- Can be optionally activated for visitor history



#### **Geofencing**

- Automatic door and gate opening when returning home



#### **Burglary prevention**

- Prevents more break-ins than an alarm system



#### **Receive packages at any time**

- Direct the delivery man e.g. to the neighbor or open the garage door via smartphone



#### **Night vision**

- With 12 IR LEDs



#### **Light sensor**

- For night vision mode



#### **Motion sensor with 4D technology**

- Distance up to 10 m adjustable via App (interval: 1 m)



#### **HDTV Video**

- Ultra-wide-angle, hemispheric lens, 180°



#### **Echo and noise suppression (AEC, ANR)**



#### **RFID card reader**

- Configurable remotely via App (e. g. schedules)



#### **Call button**

- With backlit nameplate



#### **Easy connection to the network**

- Connection via RJ45 socket or bell wire via 2-wire transformer (PoE, network data)



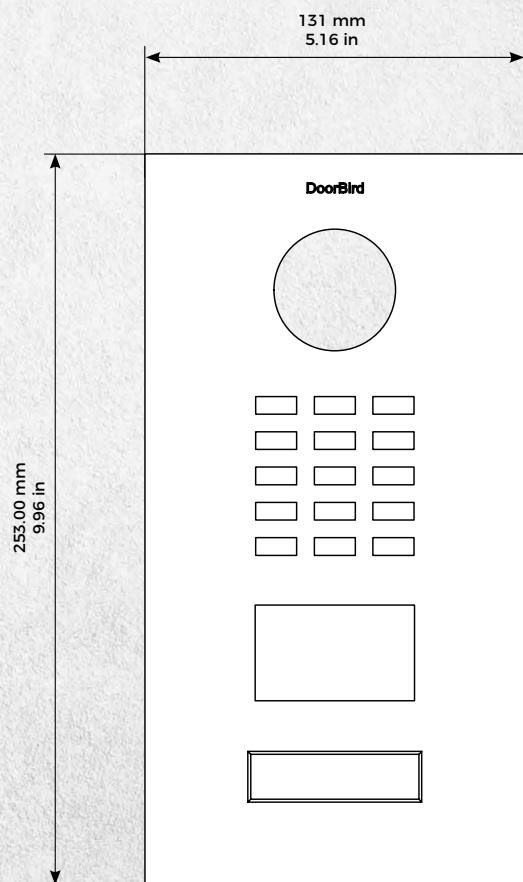
#### **Two freely configurable bi-stable switching relays**

- Control two doors or gates via App
- Status configurable via App: Temporary or permanent circuit

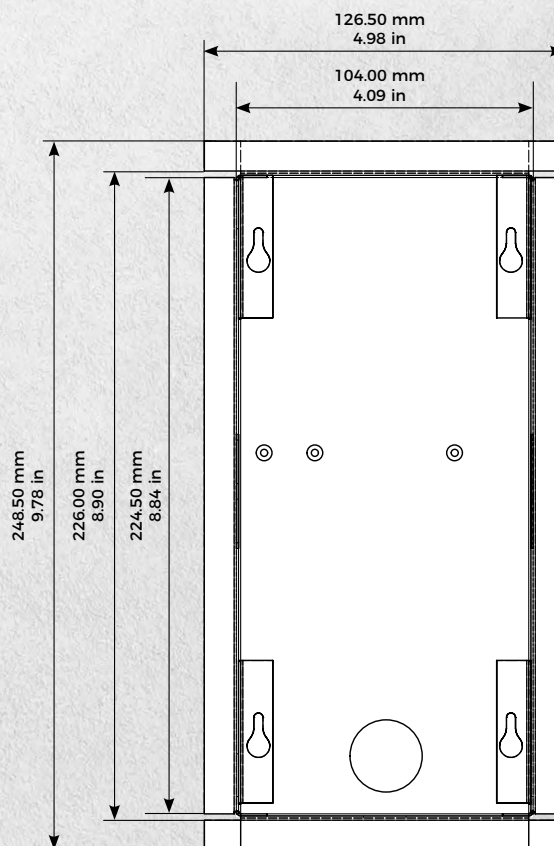




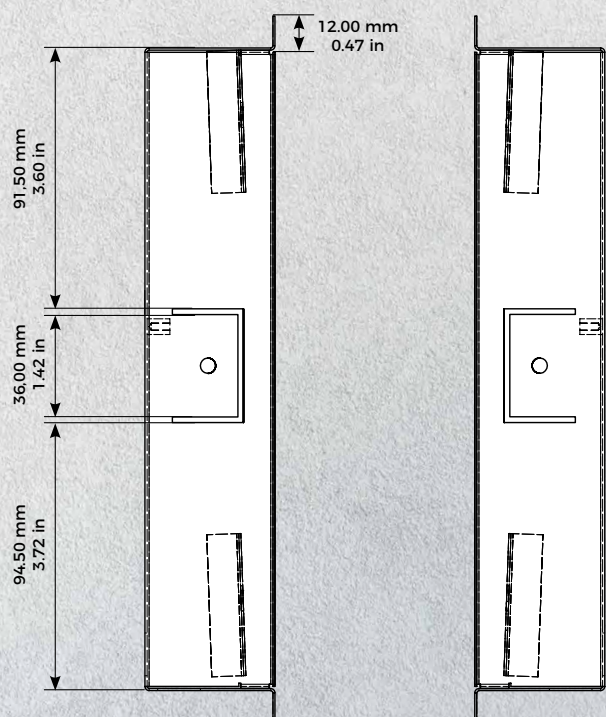
Front panel material thickness: 3.0 mm (0.12 in)



Front panel

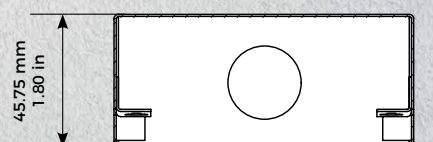


Flush-mounting housing (backbox)



Flush-mounting housing (backbox)

Flush-mounting housing (backbox)



Flush-mounting housing (backbox)



## TECHNICAL SPECIFICATIONS



**DoorBird**  
Technology meets Design.

### GENERAL

Front panel	3 mm (0.12 in) Available in over 50 RAL colors and surfaces including stainless steel V2A / V4A (see material guide)
Mounting housing (backbox)	Stainless steel
Mounting type	Flush-mounted, surface-mounting housing sold separately
Call button	Plastic. Engravable metal nameplate sold separately, see <a href="http://www.doorbird.com/buy">www.doorbird.com/buy</a>
Nameplate	Illuminated
Power supply	15 V DC (max. 15 W) or Power over Ethernet (PoE 802.3af Mode-A)
Weight	1577 g
Connectors	<ul style="list-style-type: none"> <li>• RJ45, for LAN/PoE</li> <li>• Bi-stable latching relay #1, max. 1-24 V DC/V AC, 1 Ampere, e.g. for electric door opener</li> <li>• Bi-stable latching relay #2, max. 1-24 V DC/V AC, 1 Ampere, e.g. for electric door opener</li> <li>• External input for external door opener button (potential-free)</li> <li>• 15 V DC input (+, -), max. 15 W</li> <li>• Relays can be expanded / detached with DoorBird I/O Door Controller</li> </ul>
Weather-proof	Yes, IP65
Approvals	CE, IC, FCC, RoHS, IP65, IK08
Dimensions	253 x 131 x 48,75 mm (H x W x D) 9.96 x 5.16 x 1.92 in (H x W x D)
Operating conditions	-25 to +55°C / -13 to 131°F Humidity 10 to 85 % RH (non condensing)
Scope of delivery	1x Main Electrical Unit 1x Front panel 1x Flush-mounting housing (backbox) 1x Power supply unit (mains adaptor) with four country-specific outlet adaptors (110 - 240 V AC to 15 V DC) 1x RFID key fob 1x Screwdriver 1x Quickstart guide with Digital Passport 1x Installation manual 1x Small parts
Warranty	see <a href="http://www.doorbird.com/warranty">www.doorbird.com/warranty</a>

### CURRENT SYSTEM REQUIREMENTS

System requirements	Mobile device: Newest iOS on iPhone/iPad, newest Android on Smartphone/Tablet  Internet: High-Speed Landline Broadband Internet connection, DSL, cable or fiber optic, no socks or proxy server  Network: Ethernet Network, with DHCP  Camera lens should be at a min. height of 145 cm (57 in). Before the installation please determine your optimal installation height.
Recommended installation height	

[www.doorbird.com](http://www.doorbird.com)

### VIDEO

Camera	HDTV 720p, dynamic (VGA - HDTV)
Lens	High-end ultra wide-angle hemispheric lens 180° horizontal, 90° vertical, straightened, IR-capable
Night-vision	Yes, light sensor, automatic IR-cut filter, 12 IR-LEDs (850 nm)

### AUDIO

Audio components	Speaker and microphone, echo and noise cancellation (AEC, ANR)
Audio streaming	Two-way, full duplex

### NETWORK

Ethernet	RJ45 jack, PoE 802.3af Mode-A, 10/100 Base-T
----------	--

### MOTION SENSOR

Type	Active
Detection angle	54° horizontal, 70° vertical
Range	1 - 10 m (3.3 - 32.9 ft), depends on environment, configurable in 1 m (3.3 ft) steps.
Technology	4D. Based on multiple integrated sensors and algorithms, e.g. Radio Frequency Energy (RFE)
Configuration	Via App, e.g. <ul style="list-style-type: none"> <li>• Range (1 - 10 m / 3.3 - 32.9 ft)</li> <li>• Movement direction (coming, leaving, both)</li> <li>• Individual events (e.g. switch a relay, push notification, SIP call [audio/video], HTTP(s) notification)</li> <li>• Individual schedules</li> </ul>

### RFID

Type	Active Reader Passive Tag (ARPT) system
Standard	ISO/IEC 18000-2:2009 Part 2, EM4100, EM4102
Frequency	125 KHz
Range	0 - 3 cm, depends on environment
Antenna	Internal
Compatible Transponder	RFID key fobs, sold separately, see <a href="http://www.doorbird.com/buy">www.doorbird.com/buy</a>
Configuration	Up to 100 tags manageable Via app, e.g. <ul style="list-style-type: none"> <li>• Tag (add, delete)</li> <li>• Individual events (e.g. switch a relay, push notification, SIP call [audio/video], HTTP(s) notification)</li> <li>• Individual schedules</li> </ul>

### INTEGRATED WIRELESS MODULES

RFID	125 KHz
Sensor	24 GHz, can be disabled

### OPTIONAL ACCESSORIES

Sold separately	see <a href="http://www.doorbird.com/buy">www.doorbird.com/buy</a>
-----------------	--

Special remarks:  
Assembly requires professional skills or a technician.